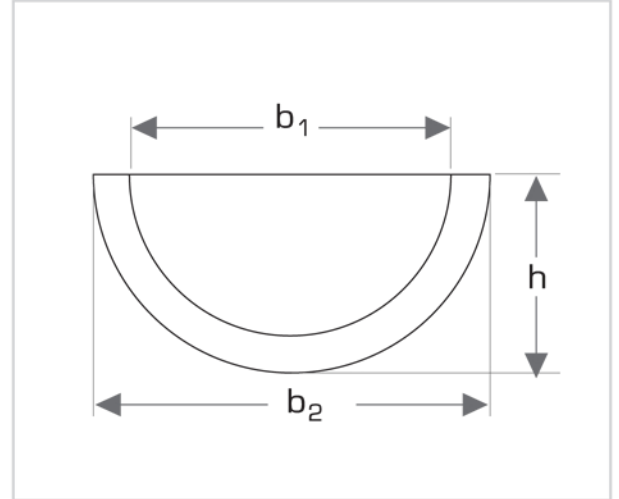
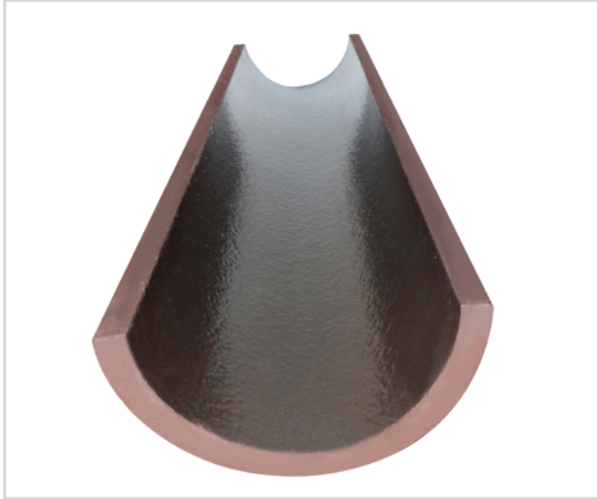


Semi-circular channels

قنوات نصف دائرية (مقطع نصف)



Nominal Size DN mm	Chord lengths		H mm	Average Weight Per Piece Kg
	Internal b_1	external b_2		
100	100	131	65	6
150	151	186	93	10
200	202	242	121	14
250	252	296	148	20
300	302	350	176	28
350	252	417	208	35
400	402	460	242	45
450	452	548	274	54
500	503	581	290	65
600	603	721	343	85
700	704	831	396	110

NOTE: Produced in standard length of 1.00 m. other lengths/diameters available on request.
Also available with socket